



# Integrate Bosch IP cameras as intrusion panel inputs and outputs

Bosch tips and benefits



**BOSCH**

Invented for life



## **Supervised motion detectors** using Bosch IP cameras

B Series and G Series control panels have a built-in network connection and can integrate directly with Bosch IP cameras, using them as fully supervised detection points. All Bosch IP cameras support customizable motion detection, audio detection, and anti-masking which increase the level of detection without adding costs.



**Key benefits**

- ▶ Add supervised motion or audio detection to intrusion panel using any Bosch IP camera
- ▶ Send video images with B Series personal notifications
- ▶ Control recording, PTZ and other camera features using intrusion panel
- ▶ No NVR needed; Capture video on SD memory cards



IP CAMERAS	
Camera name	Camera 1
Camera name (second language)	Front Door Camera
URL or IP address	192.168.0.103
Bosch Connected Cameras	
RCP+ port #	1756
Service password	
Supervision period (sec.)	30
Live (Video)	
Port #	80
Use HTTPS?	No
User Name	
Password	

Network address

Point supervision



Source to IP camera

**Step 1:**

Program the DNS or IP address of the camera into the B Series (B3512, B4512) or G Series (B8512G, B9512G) control panel and change the detection point's SOURCE to IP camera.

**Step 2:**

Log into the Bosch IP camera and program Video Content Analysis (VCA) to configure motion, audio, or any other analytical alarms. When the IP camera detects motion or any other video analytical alarm.

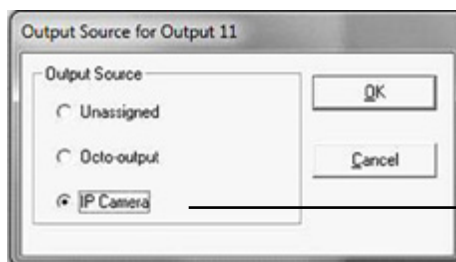


## No NVR required

The surveillance software is included and video can be recorded on the IP camera's SD card or remotely on a PC, Drop box account, or FTP server.

# Personal Video Notifications Using Bosch IP Cameras

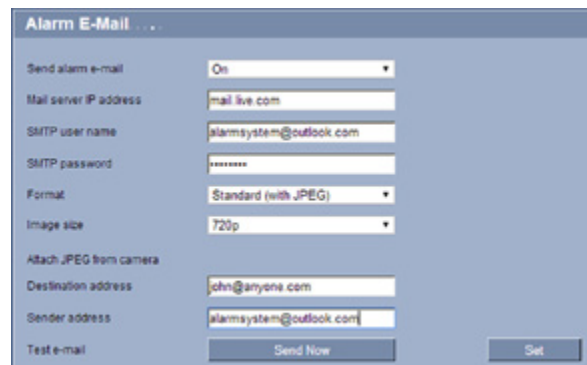
B Series and G Series control panels can send personal notifications directly to the end user at no cost using live images from the IP camera. Video images can be easily added to any personal notification, such as opening /closings, alarm verifications, and motion detection.



Output source to IP camera

### Step 1:

Program one of the panel outputs as IP CAMERA and then configure that output for alarms, openings / closings, or any other panel event. When the output activates, the panel will activate the camera's virtual input over the customer's network.



### Step 2:

Log into the camera and program ALARM EMAIL to enter the destination email settings for the personal video notifications. You can also include the camera's DNS or IP address in the notification, allowing the recipient to connect directly to the activated by simply clicking on a link in the message.

The outputs of B Series and G Series panels can also control other IP camera options including PTZ and video recording.

### **Application 1:** Motion Detection with Video Analytics

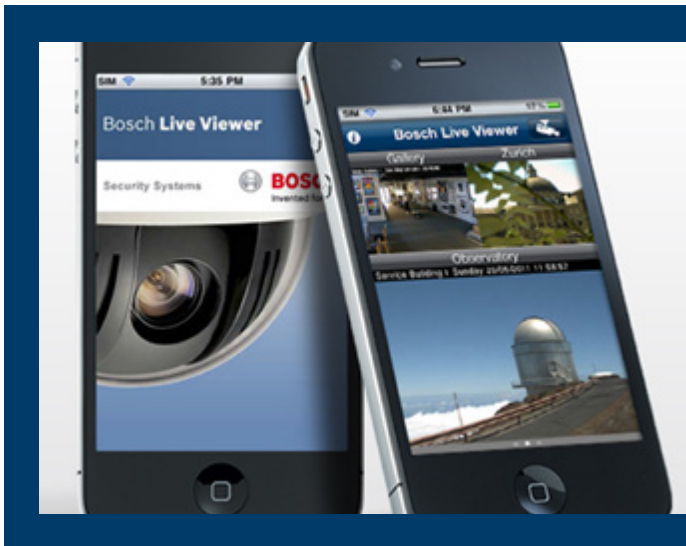
Every Bosch IP camera features a common platform for viewing, programming, and advanced video analytics. VCA allows for motion detection to be programmed in a selectable view. If sources of false alarms could be present, simply mask them in the camera's field of view.

### **Application 3:** Built-in Two-way Audio

Most Bosch IP cameras feature a built-in microphone and loudspeaker that allows remote users to listen in on an area and to communicate with visitors or intruders. Audio detection can be used to generate an alarm if needed

### **Application 2:** Burglary Cross Zoning using IP Cameras

Each IP camera is a detection point on the B Series panel so arming status and programmable options such as Burglary Cross Zoning can use the IP camera as the second alarm. The camera can detect motion within a selectable view, audio within a selectable frequency and volume, and tampering such as masking of the camera.



To manage many IP cameras or multiple sites on a mobile device and control camera features such as pan, tilt, zoom (PTZ), and audio, Bosch Security offers additional free video apps at [appcenter.bosch.com](http://appcenter.bosch.com).



### **Bosch Security Video Portal**

To watch Bosch products in action or for demonstrations of these features and more, visit [video.boschsecurity.us](http://video.boschsecurity.us)

### **Bosch Security Online Training Academy**

To learn how to learn how to install and program Bosch products or register for one of our classroom trainings, visit [training.boschsecurity.us](http://training.boschsecurity.us)